

SUBMITTING A CLAIM



Email at claim@majorplan.ca

Take a picture of your invoice or scan it



Directly through the dentist office

Use the TELUS ADJUDICARE 34/AUTOBEN digital ID



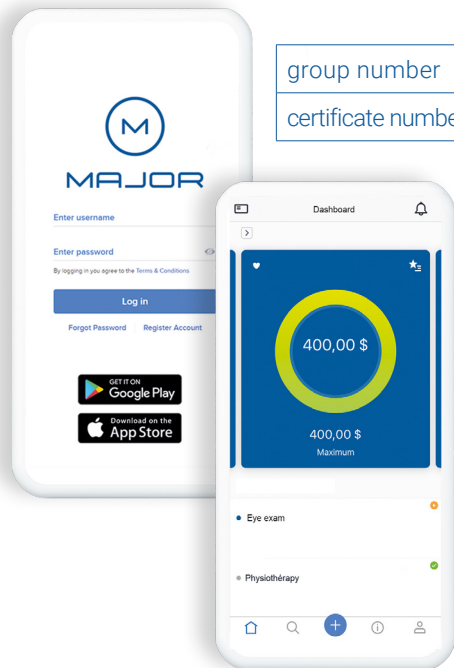
Mobile App or Web Portal

Connect to our platforms

In your communications, please indicate : name, student ID number and group number. You can also include a void check for faster reimbursement.

Claims will be processed once the plan's withdrawal period is over. Claims are paid within six business days of being received.

MOBILE APP AND WEB PORTAL



group number	56028
certificate number	Student ID Number

Download
Major Mobile or
subscribe to our
web portal

- ✓ Claim online
- ✓ View your benefit statements
- ✓ Consult your claim history

DISCOUNT- NETWORK

Keeping your plan allows you to benefit from discounts and preferential rates offered by different specialists.

Groupe visuel Iris

\$150 off on prescription eyewear

\$150 off on prescription sunglasses

\$250 off on laser vision correction

Centres Dentaires Lapointe

10% off on all treatments (up to \$500)

Énergie Cardio

\$80 off on an annual membership - *Le Déterminé*

Nautilus Plus

\$75 off on an annual membership - *Boomerang*

Clinique de Psychologie Québec

10% off on your first consultation

Yoga Fitness

Subscription to the online platform for only **\$17 / month**

La clinique du Kiné

20% off on your first consultation



Please note that these offers may change without notice.

Visit our website for more
discounts !

CONTACT US

majorplan.ca

student@majorplan.ca

1 877.976.2567



Ancient
Forest
Friendly™



Think green before
you throw away



Major Plan
The simple truth.

majorplan.ca

1 877.976.2567

AGECU |
Association générale étudiante
du Collège Universel

Complementary group
insurance plan | **2021-2022**



**COVERAGE
PERIOD**

From September 1, 2021

to August 31, 2022

This coverage period applies to students enrolled in both semesters. All tuition fees must also be paid.

IMPORTANT NUMBERS

Certificate number	Student ID Number
Group number—health and dental care	56028
Group number—accident	SRG 9140579-009
Group number—travel	9426277-021
Digital ID number—dentist office	TELUS ADJUDICARE 34 / AUTOBEN

VISIT majorplan.ca

FOR MORE DETAILS ON YOUR PLAN

PLAN ENROLLMENT

Your plan enrollment fees will be added to your tuition invoice. You must pay the invoice in full to submit claims.

The plan enrollment may include premiums, administration fees, commissions, financial securities and taxes related to the plan.

HEALTH, DENTAL, ACCIDENT AND TRAVEL

Fall – 5 months
September 1 to January 31

\$ 44

Winter – 7 months
February 1 to August 31

\$ 44

Total per year

\$ 88

Adding dependents
Same coverage as the insured

\$ 88 / child

During the opt out and modification period, you have the option to add dependents by completing a form on our website and paying the additional annual fee.

COORDINATION OF BENEFITS

Coordination of benefits allows you to combine this plan with your employer, spouse or parents plan. Visit our website for more details !

YOUR COVERAGE

Please note that your plan does not include drug insurance.

HEALTH CARE ASSUMPTION LIFE		56028
Paramedical services and vision care		
Chiropractor Physiotherapist	\$30 / visit, max. combined \$175 / coverage period	global max. \$250 / coverage period
Dietitian Massage therapist* Podiatrist	\$25 / visit, max. combined \$175 / coverage period	
Eye examination	\$25 / 12 consecutive months	

Extended health benefits

Semi-private hospital room (hospitalization)	100% of fees - \$30 / day (max. of 5 consecutive days per hospitalization), max. \$300 / coverage period	global max. \$400 per 12 consecutive months
Ambulance (ground only)	60% of fees, max. \$250 / coverage period	
Nursing services*	70% of fees, max. \$400 / coverage period	
Blood tests* (including health assessments)	50% of fees, max. \$50 / 12 consecutive months	
X-rays and private ultrasounds (including maternity ultrasounds)	60% of fees, max. \$100 / coverage period	
Vaccines ¹ (excluding administration fees and allergy injections)	50% of fees, max. \$50 / coverage period	

*Medical referral required
¹Not covered under RAMQ



DENTAL CARE ASSUMPTION LIFE		56028
Global maximum of \$230 / coverage period		
Clinical oral examination X-ray Laboratory tests Tooth polishing	50% of fees (subject to contractual maximums)	
Teeth extraction (including wisdom teeth) Gum treatment Dental filling (composite fillings (white) are only covered for the anterior teeth)	60% of fees, max. combined \$200 / coverage period	

ACCIDENT INSURANCE AIG INSURANCE COMPANY OF CANADA		SRG 9140579-009
Physiotherapist	100% of fees, max. \$300 / accident	global max. \$10 000 / accident
Chiropractor	100% of fees, max. \$300 / accident	
Semi-private hospital room	100% of fees, max. \$5 000 / accident	
Ambulance transportation	100% of fees, max. \$5 000 / accident	
Private duty nursing	\$50 / hour, max. \$5 000 / accident	
Medical supplies	Full coverage available on the website	
Dental accidents	100% of fees, max. \$1 000 / accident	
Services of a qualified teacher	\$20 / hour, max. \$300 / accident	
Death, paralysis and dismemberment benefits	Up to \$10 000 in benefits	

TRAVEL INSURANCE AIG INSURANCE COMPANY OF CANADA		9426277-021
Medical emergencies abroad	up to \$ 5 000 000	Consult your Travel Passport
Duration of the trip out of province of residence	max. 180 consecutive days	

The information is provided for reference purposes only. Terms in the contracts prevail. Age limits may apply. Medical referrals may be necessary and some services must be provided by licensed professionals. It is important to check if you are covered under another plan and to compare the coverages.

COVERAGE MODIFICATIONS

During the opt out and modification period, it is possible to withdraw from the plan or to add dependents. You will not be able to withdraw from the plan in the winter semester if you choose to keep the plan in the fall.

Opt out and modification period

Student enrolled in the fall | **August 28 to September 19**
New student enrolled in the winter | **January 28 to February 19**

Opt out procedure

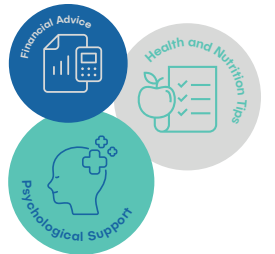
Enrollment in the plan is automatic. During the opt out and modification period, you can withdraw from the plan directly on our website. You must withdraw at the beginning of each academic year. Please note that it is impossible to withdraw yourself partially from the plan.

If you choose to opt out, Major Plan will reimburse your plan enrollment fees within two weeks following the withdrawal period.

STUDENT ASSISTANCE PROGRAM

This confidential service allows you to have access to a variety of assistance and information. You can receive psychological support. Also, you have access to guidance for your health and budget organization.

Register for the web portal and download the mobile app to access consultations, a resource center, tips and more ! Visit majorplan.ca for more details.



The coverage is offered by :

Health/Dental: Assumption Life

Accident: AIG of Canada

Travel: AIG of Canada

